

# *Unit 1 – Geography Basics and Themes*

*Day 1*

# **THE THEMES OF GEOGRAPHY**

*Maps help you know just how lost you really are.  
And, remember, you can't spell "LOST" without "LT"*

# Objectives

- **Identify the Five Themes of Geography**
- **Understand how we use these themes to study Geography**
- *Terms:*
  - **Geography**
  - **Location**
  - **Place**
  - **Map**

# GEOGRAPHY

## GEOGRAPHY

**“You can’t know where you are going, if you don’t know where you are now.”**

**- Charles De Gaulle**

**“To truly understand WHO you are, you must understand WHERE you are.”**

**– Josephine Hart**

**“Geography has made us all neighbors.”**

**- John F Kennedy**

# What is Geography?

- The study of the physical, biological, and cultural features of Earth's surface

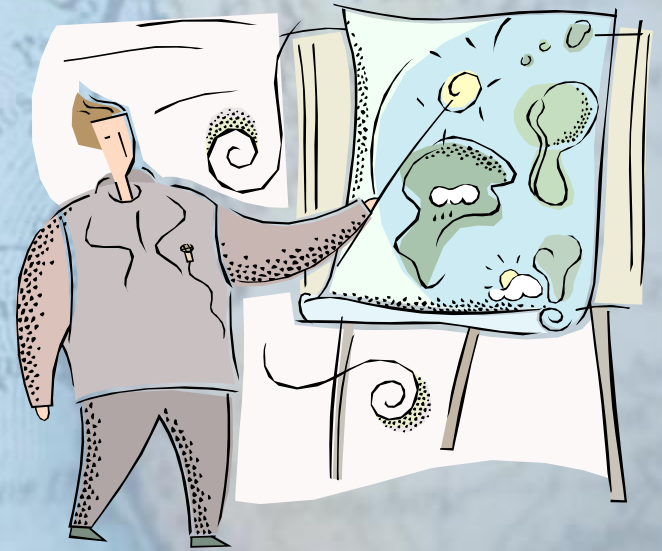
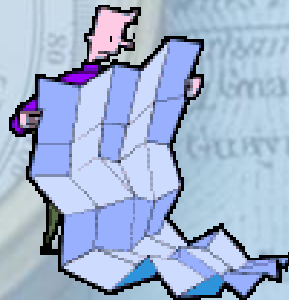
Why is that important?

# WHY do we study Geography?

- Are we part of it?
- *We are part of the physical environment*
- *We are living*
- *We have culture*
- *We are on the surface of Earth* 😊

# Along with Geography?

- Cartography
  - *Study of maps and mapmaking*
- Meteorology
  - *Study of weather*
- Sociology
  - *Study of people*
- And more!



# How do we study Geography?

- **5 Themes**

- **Location**

- **Place**

- **Human-Environment Interaction**

- **Movement**

- **Region**



# How do we study Geography?

- **5 Themes**

- **Let**

- **People**

- **Have**

- **More**

- **Root-beer**



# How do we study Geography?

- **5 Themes**

- Location

- Place

- Human-Environment Interaction

- Movement

- Region





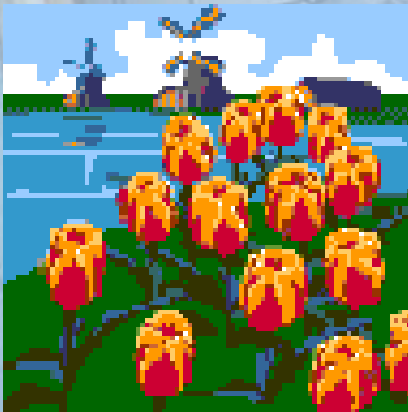
# LOCATION

- Exact or relative spot of something on Earth
- *Example: Riverdale, Utah*
- *Or, Utah Military Academy*



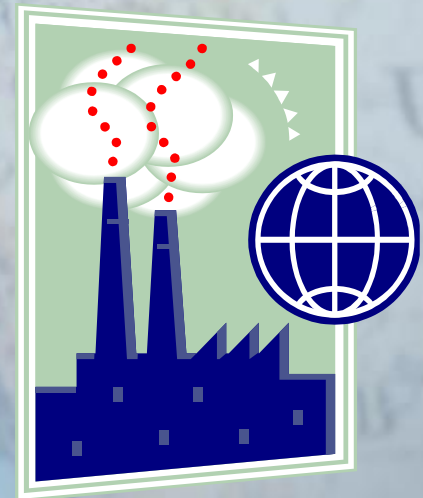
# PLACE

- Physical and human features of a *location*
- *Example: Schools, Cities, Jungles*



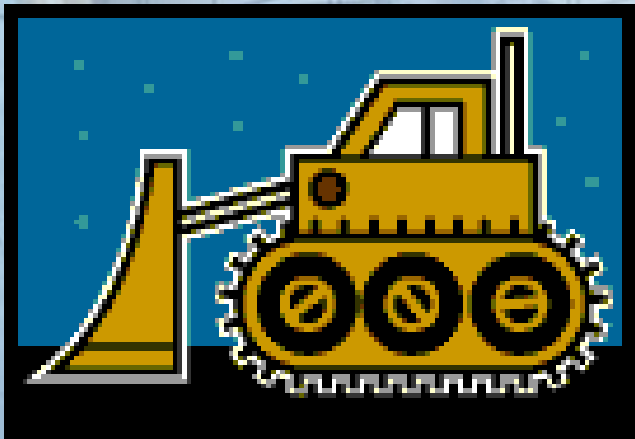
# Human-Environment Interaction

- The way people and environments interact with and affect each other.
- *Example: People cause pollution*



# MOVEMENT

- How people and things change locations and the effects of these changes
- *Example: The LDS Pioneers move West*



# REGION



- Organizes Earth into geographic areas with one or more shared characteristics.
- For example –
  - Asia
  - North Hemisphere
  - “the Arctic”
  - The Pacific Ocean
  - “the Middle East”



# How ELSE do we organize the Earth?

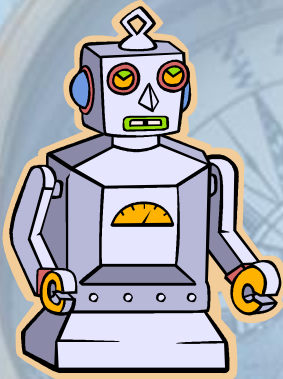
- MAPS

A visual representation of an area

- *(remember they can be physical or mental, and come in many types)*



# MENTAL MAP



Practice

*Program A Robot To...*

# Objectives

- **Identify the Five Themes of Geography**
- **Understand how we use these themes to study Geography**
- *Terms:*
  - **Geography**
  - **Location**
  - **Place**
  - **Map**