

*Day 2 –*

# **FAMILY:**

**We get a lot from  
them**

*“Insanity is hereditary – you get it  
from your children”*

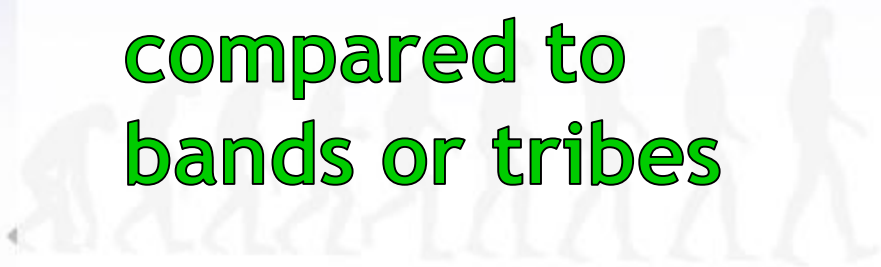


# Objectives

- ▶ Understand some biological factors of evolution
- ▶ Compare and contrast humans from other primates
- ▶ Identify what a “family” is, compared to bands or tribes

## ▶ *Terms:*

- ▶ Heredity
- ▶ Genes
- ▶ Primates
- ▶ Family
- ▶ Band
- ▶ Tribe



# *Remind Me...*

- ▶ **What is Evolution?**
- ▶ **Why do humans evolve?**
- ▶ **What about Natural Selection and mutations?**
- ▶ *Today we look at some of the biological ways of studying evolution... but we do NOT go “all in” like in a Science course*



# *Family First*

- ▶ *What is a “family”? How would YOU define it?*
- ▶ *Is there a scientific definition? What about a more “social” definition?*
- ▶ *Are humans the only ones who have them?*
- ▶ *What does a “family” give you?*



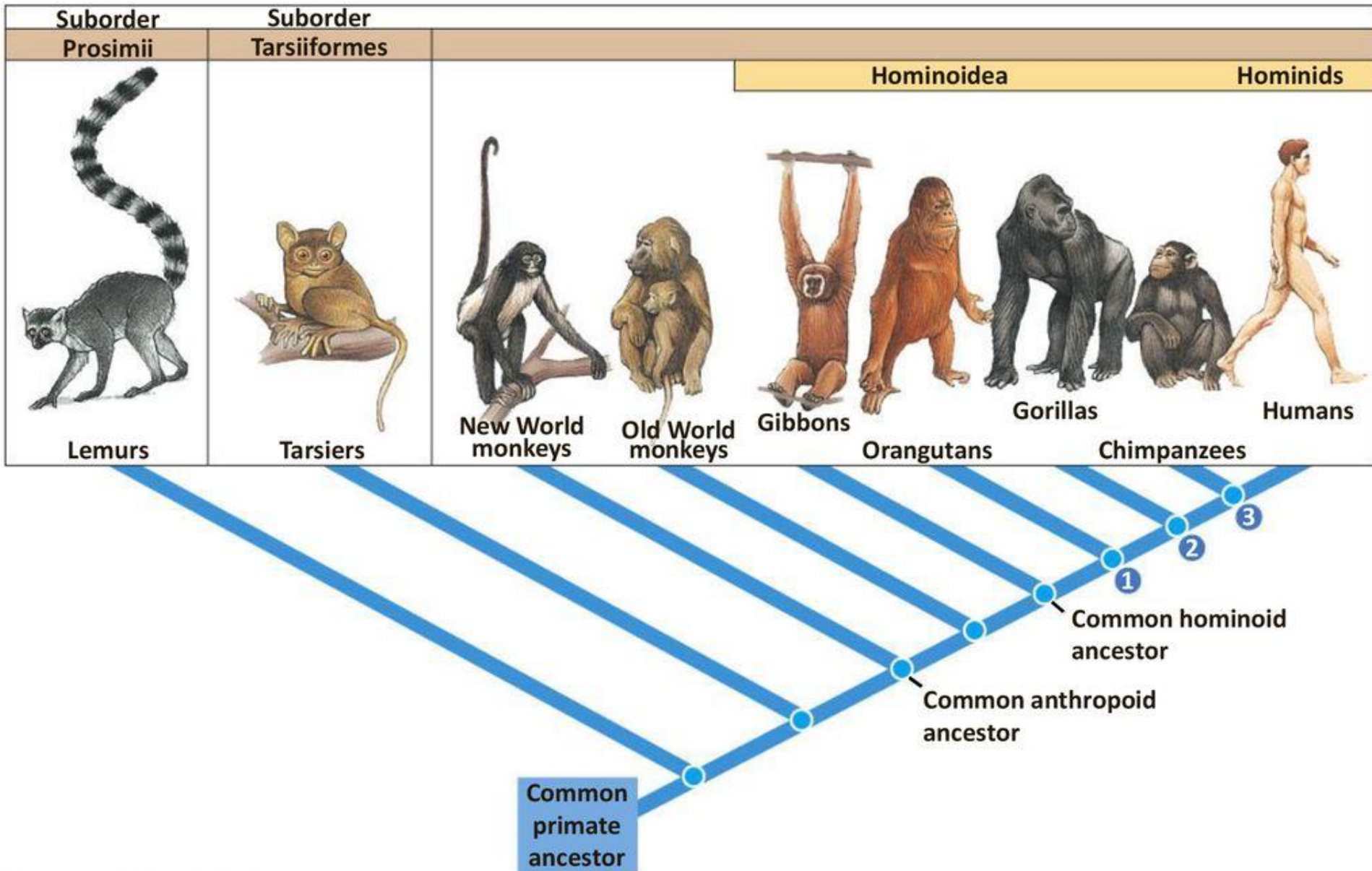


# So Who's In Our “Family”?

- ▶ Humans, as a species, have an interesting “family” legacy...
- ▶ *Kingdom* - Animal
- ▶ *Phylum* - Vertebrate
- ▶ *Class* - Mammal
- ▶ *Order* - Primate
- ▶ *Family* - Hominid
- ▶ *Genus / Species* - Homo Sapiens



# Order: Primates



# Amazon Primate

- ▶ *What kind of family are we? What traits do we share?*
- ▶ **PRIMATES**
- ▶ **Upright Posture, Opposable Thumbs, Large Brain, Long Legs, Color Vision, Different Teeth...**
- ▶ **But the largest, most important difference for anthropologists... ONLY humans have...**
- ▶ **LANGUAGE!!!!**
  - ▶ **We are the only species to create and use symbols to communicate**
  - ▶ *Others may RECOGNIZE but not CREATE*



Mamička mor  
MAMA Mamma  
mom Anne  
Maman  
EMA madre  
maminka  
Anyu māe  
MOTHER Mutter

brālis Frate Schwester  
Anai Arreba  
ZUS Sora  
Bruder Брат BROER  
A hermano deirfiúr BRAT  
Māsa sorella Siostra  
cestdpa Fratello  
Brother Schwester SISTER

šeimos družina  
Aile Porodnye  
Семья  
RODZINA ġimenes  
familia FAMILY  
Teaghlaigh družina  
Család  
Porodnye Keluarga

Tētis Tatko pappa  
dad ПАПА Pabbi  
PADRE dad  
Tatko  
Oče pappa Táta  
h FAR Apu  
papà Isä aya  
Baba

# Watch Your Language!

- ▶ A “family” isn’t just about language and symbols, but also often has *biological* factors too!
- ▶ *Have you ever been told you look like your parent?*
- ▶ **WHY is that?**







# A New Pair Of Genes

## ▶ Heredity

- ▶ How traits are passed from parent to offspring

## ▶ Genes

- ▶ The unit to measure heredity
- ▶ Determines a specific trait
- ▶ *The color of skin, hair, and eyes, but also things like diseases, height, or predispositions towards or away from certain things*
- ▶ **Coded by DNA**
  - ▶ Remind me, what is a mutation?







# We Are Family

- ▶ *But is “family” all just biological? Anthropologists say no, and that we have other terms that may be less “biology” and more “sociology”...*
- ▶ **Band**
  - ▶ Smallest type of society
  - ▶ Simplest organization (if any)
  - ▶ *Think of your group of friends*
- ▶ **Tribe**
  - ▶ Several “bands”
  - ▶ Has structure, or organization, or *leadership*
  - ▶ *Are there natural leaders? “Chiefs”?*





# And so...

- ▶ *In Anthropology “family” can have a biological and scientific meaning, but also a “social” one*
- ▶ *We can’t avoid that some things we get from our families, biologically...*
- ▶ *In a future class we’ll be looking at the “social” things we get from families, bands, and tribes...*
- ▶ *Remember that we can’t always choose our families, but we CAN choose our “families”*







# Objectives

- ▶ Understand some biological factors of evolution
- ▶ Compare and contrast humans from other primates
- ▶ Identify what a “family” is, compared to bands or tribes

## ▶ *Terms:*

- ▶ Heredity
- ▶ Genes
- ▶ Primates
- ▶ Family
- ▶ Band
- ▶ Tribe

